



ATLAS

COMPANY PROFILE





Since its formation over 60 years ago on Auckland's North Shore, Atlas Concrete has grown with Auckland. In many ways Atlas has helped lay the foundations of this vibrant city.

All of the Company's operations are still concentrated throughout the Auckland region from its core pre-mix and associated specialist concrete manufacturing divisions through to quarrying of aggregates; sand dredging and barging; building supplies and the recycling of concrete product.

The Company's close association with Auckland is mirrored in its even closer partnership with the region's major builders, construction organisations and architects, both civil and civic. Working with the industry, Atlas has developed, and is continuing to design and introduce, innovative engineered solutions to speed construction and reduce costs.

Today, Atlas employs over 280 people, operates over 120 concrete delivery trucks and around 70 other specialist vehicles and handling equipment. Every piece of machinery and plant from the three massive sand barges, the quarry operation, the specialist concrete pre-cast and pre-mix divisions is 100% company owned and operated.

Atlas understands Auckland, for the past 60 years it has helped build it. The Company is stronger now than it has ever been, it's solid reputation amongst its building partners is the envy of others.

Atlas Concrete, a great company for a great City.

Contents

- 1 Atlas Concrete, then and now.**
- 2 Pre -Mix Concrete**
- 3 Pre-Cast Concrete**
- 4 Insulated Floor System**
- 5 Building Supplies**
- 6 Aggregate Quarry**
- 7 Sand Dredging and Barging**
- 8 Recycling and the Environment**

Inside Back Cover
Company locations

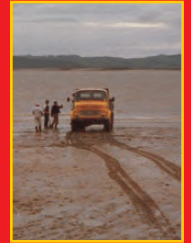




Some of the original post war U.S. Army surplus equipment converted by Atlas to fill their commercial requirements



Barging operations in the 1970's and an early 4x4 Mercedes truck on Shelley beach



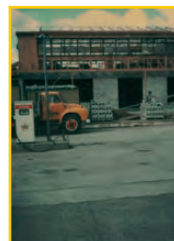
Shortly after the end of the Second World War Melville "Bunny" Collie went into business selling sand, metal chip and shingle in Takapuna, the Company prospered and it wasn't long before the resourceful Mr. Collie went into sub-dividing land on the North Shore.

Sub-division meant roads and buildings which needed concrete and other building materials. Bunny Collie sold, or had access to, the basic materials, so nothing was simpler than to make the product himself. It wasn't long before Bunny was developing land and building some of the first shops and offices in Takapuna and Birkenhead. Many are still there today.

As the company grew so did its need for sand, shingle and aggregate which ultimately led to the sand barging operation in Helensville and the quarry south of The Brynderwyns.

The company is run today by Bunny Collie's son Graham, still headquartered in the original Wairua Road site developed by his father.

With Graham's brother Steven managing the Mount Rex operation and his son Andrew working in the Recycling Division, Atlas is still very much a family business today.



Early days during the Takapuna headquarters building development

Atlas Concrete, then and now.



The production and delivery of Pre-Mix concrete is still the driving force behind all of the Company's other operations.

Atlas currently produces around 200,000 cubic metres of concrete a year from five locations in the Auckland Region. All the plants produce concrete to meet all the requirements of today's construction and architectural needs.

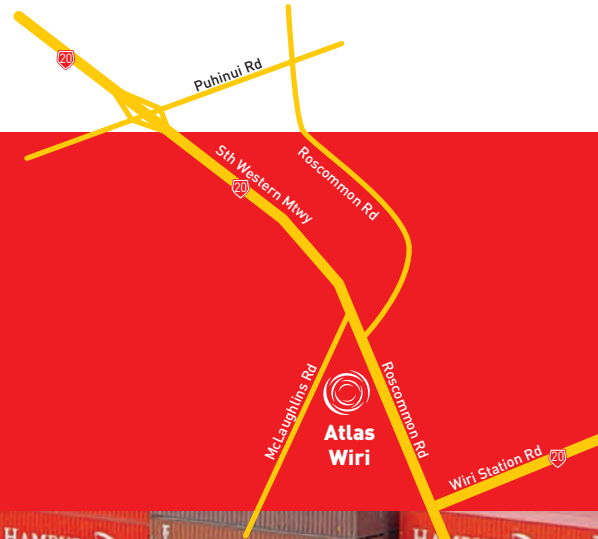
Different colours, textures and strengths are produced and delivered to the exacting demands of the industry. Atlas have a fully equipped laboratory on site to ensure that the product meets the engineered specifications.

This volume represents over 25% of the total Auckland requirement for pre-mix concrete. And as that requirement grows so will Atlas's ability to meet it.

Pre-Mix Concrete

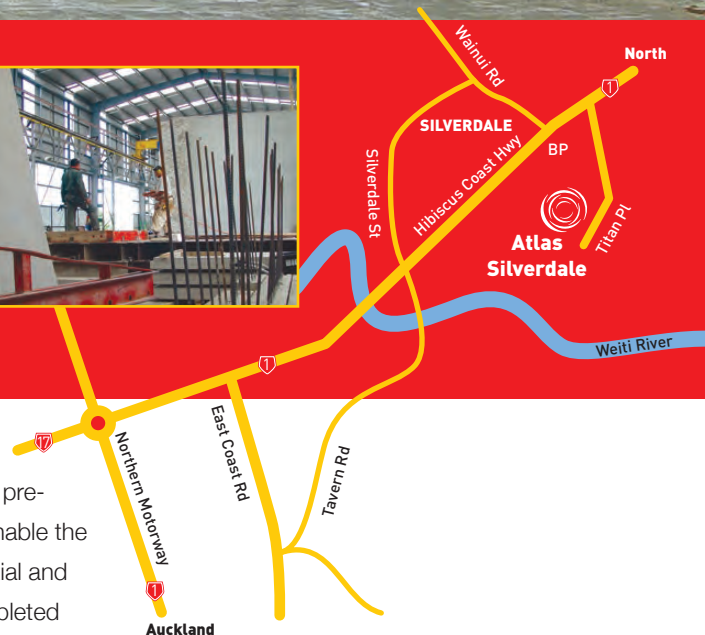


From preparation to testing, mixing and delivery, Atlas supplies over 25% of Auckland's pre-mix concrete needs





Preparation and production of custom made tilt slab panels



The Silverdale Tilt Slab plant produces finished pre-cast concrete Tilt Slab panels in a variety of finishes and texture, shapes and sizes to meet the precise requirements of each new construction.

The panels represent speedy, pre-engineered solutions which enable the construction of larger residential and industrial buildings to be completed faster and more cost effectively than conventional methods.

The Tilt Slab plant has the capability and the capacity to meet the demands of the today's construction industry and that of the future.



Pre-Cast Concrete

Atlas has helped pioneer this revolutionary flooring system which is a fast and economical way to construct durable floor slabs with superior insulating qualities.

The use of 200mm polystyrene over most of the floor area topped with 85mm of concrete is suitable for the majority of sites where conventional foundation systems have been specified.

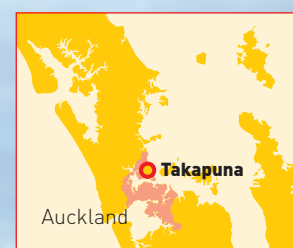
The many advantages of this unique flooring system, from installation to the resulting benefits to the occupier, are fast becoming recognised throughout the building trades.



Insulated Floor System



Durable and stylish, Atlas's insulated floor system has superior insulating qualities





Hand tools, reinforcing steel, bagged products to bulk aggregates

Bunny Collie began Atlas selling building supplies and today it still forms a major part of the company's business.

A large part of the product comes from Atlas's own sand and aggregate operations at Helensville and The Brynderwyns along with many other bulk and bagged products.

Whether you need a truck load, a trailer load or just a few bags, Atlas has just the right product.



Building Supplies

Located north of Auckland in The Brynderwyns is one of the largest privately run quarrying facilities in the country.

Producing over 50 thousand tonnes of aggregate annually the plant and all the associated handling equipment is totally owned and operated by Atlas.

The material produced at the complex is transported throughout the Auckland and Northland regions for use in roading, construction and the production of concrete.



Aggregate Quarry



Atlas's quarry operations include extracting and grade preparation for the mined aggregates prior to delivery

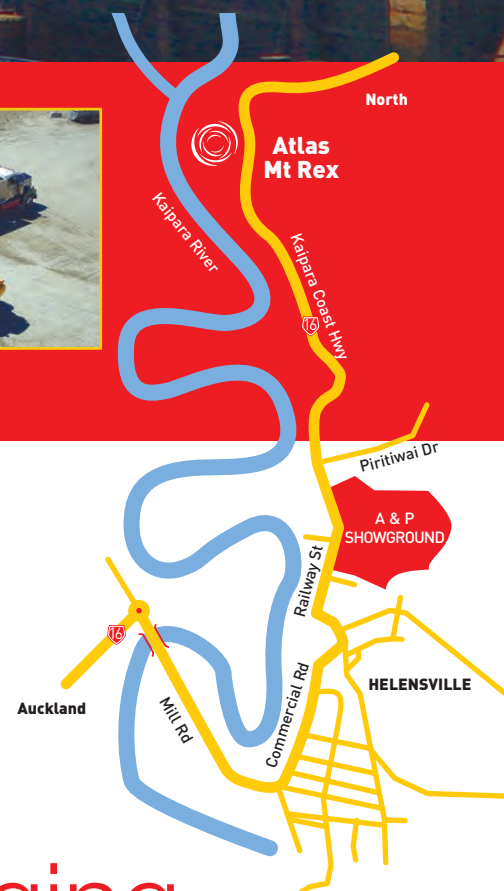




Sand from the Kaipara Harbour and aggregates from the Brynderwyn's transported and distributed through the Mount Rex complex

On the Kaipara Harbour at Helensville Atlas dredges for sand and transports it to Auckland on one of three massive barges owned and operated by the company.

Over 120 thousand cubic metres of sand are dredged and moved this way every year. The sand is used throughout the Auckland region in the production of concrete and the construction industry and also in a wide variety of horticultural and agricultural uses.



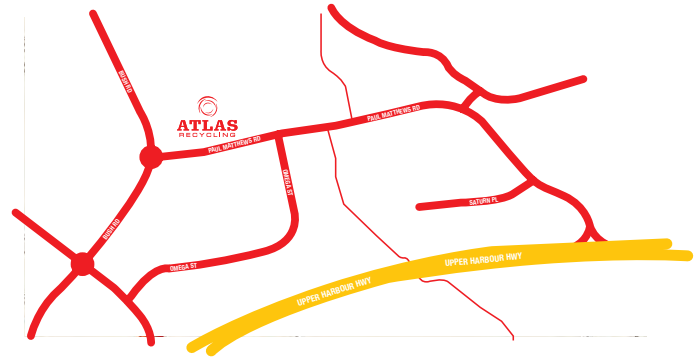
Sand Dredging and Barging

Atlas Concrete is not only at the forefront of the construction industry it is also a driving force behind the recycling of demolished concrete product. This material is crushed into small fragments and reused as base material and in the production of new concrete.

Equally, at our mining and dredging sites Atlas have accepted their responsibilities to act in an environmentally responsive manner and are constantly aware of this on a day to day, and in the longer term at all facilities.



Recycling and the Environment



Recycling, crushing and grading concrete for reuse at the Kumeu plant



Company Locations

Head Office

Atlas Concrete Ltd

11 Wairau Road
Takapuna
PO Box 33-244
Auckland
New Zealand

Ph 09 486 3333

Atlas Concrete Ltd

Cnr Roscommon &
McLaughlins Road
Wiri
Auckland
New Zealand

Ph 09 277 7197

Atlas Concrete Ltd

10 Titan Place
Silverdale
Auckland
New Zealand

Ph 09 426 9551

Atlas Concrete Ltd

25 Morrin Road
Panmure
Auckland
New Zealand

Ph 09 570 8550

Atlas Concrete Ltd

State Highway 16
Kumeu
Auckland
New Zealand

Ph 09 412 9456

Atlas Concrete Ltd

Maungaturoto
State Highway 1
PO Box 21
Brynderwyn
New Zealand

Ph 09 431 8303

Atlas Concrete Ltd

Recycling Division
8 Paul Matthews Road
Albany
Auckland
New Zealand

Ph 09 489 6225

Mt Rex Shipping Ltd

Kaipara Coast Hwy
Helensville
Auckland
New Zealand

Ph 09 420 8175

Atlas Quarries Ltd

Maungaturoto
State Highway 1
PO Box 21
Brynderwyn
New Zealand

Ph 09 431 8303

Atlas Tilt Slab Ltd

10 Titan Place
Silverdale
Auckland
New Zealand

Ph 09 426 9497

Company operations and map references





ATLAS

Head Office

11 Wairau Road, Takapuna, PO Box 33-244
Auckland, New Zealand

Ph 09 486 3333

Atlas companies are divisions of Atlas Resources Limited